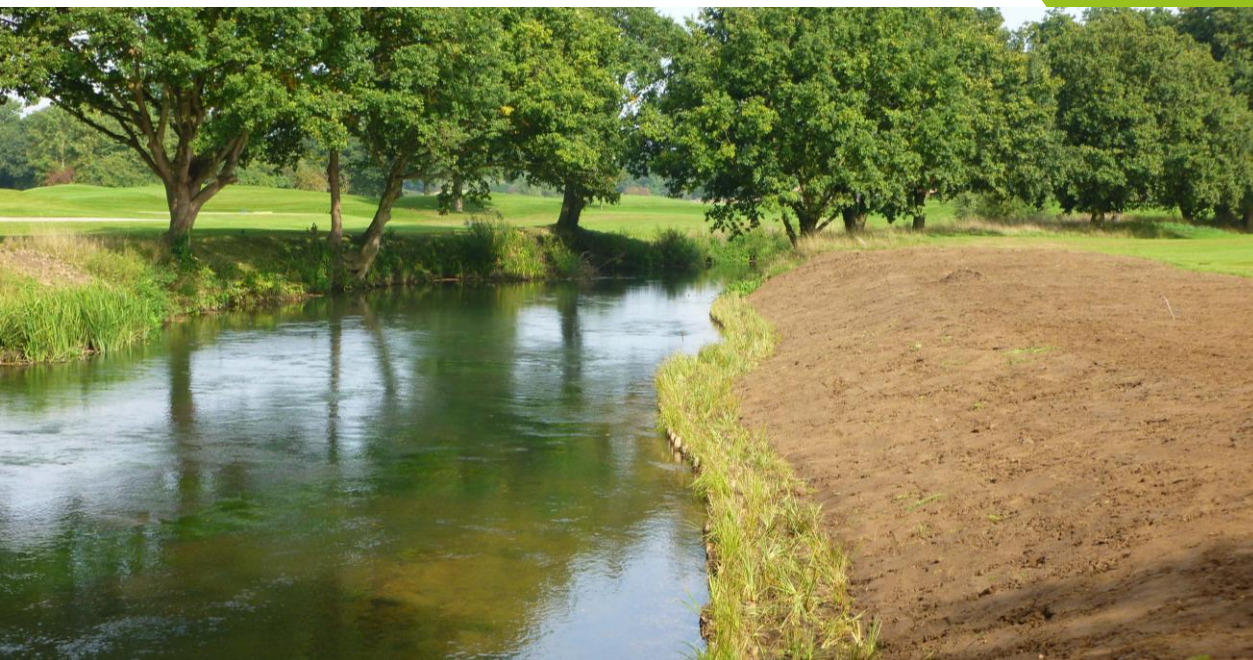


River Bank Erosion Management at Wisley Golf Course

Years of erosion on a riverbank by Wisley Golf Course had resulted in vertical unstable banks, these were both unsightly and caused a health and safety issue. Salix were appointed to use our pre-established Coir Rolls and Coir Pallets, preventing erosion naturally.



Working with Global Golf Builders we regraded the riverbanks, added in Coir Rolls and Coir Pallets and hydroseeded the soil.

Local stone was strategically sited in areas identified by the fisheries officer to enhance opportunities for the spawning of fish in the River Wey, which is, at times, a fast-flowing river.

This methodology stabilised the banks quickly, the natural erosion control afforded by the Coir products and planting has not only withstood a significant flood event but also look beautiful.